



**2026 Reds In The Rockies Bull Sale**

## WELCOME TO OUR ANNUAL BULL SALE

Dear Valued Customers,

*Welcome* to our Annual Bull Sale! We are excited to present to you this exceptional offering of high-quality bulls, carefully selected to meet the diverse needs of your operation. Whether you're looking to improve genetics, enhance herd performance, or maximize your bottom line, we believe you will find the perfect bull to fit your program.

At Hoffer Red Angus, we have always been committed to breeding animals with superior traits for both performance and temperament. This year's offering includes a range of bulls, all bred from proven genetics, with a focus on calving ease, growth potential, and overall herd sustainability.

Each bull in this catalog has been raised in a practical environment, allowing us to assess their performance in real-world conditions. We're confident that the bulls on offer will not only meet but exceed your expectations for fertility, structure, and soundness.

As always, we are here to answer any questions you might have about any of the bulls or the sale process itself. We encourage you to take your time reviewing the catalog and to reach out to us for more information.

In 2025, we focused on creating the highest quality bulls we could and you will notice this is a smaller offering than we've offered in the past. We made a strategic decision to keep cows mostly from six female lines that have really impacted our program and will be the foundation moving forward. We are only interested in providing our customers with cattle that work at this elevation and environment. This is an incredibly strong set of bulls that we are excited to offer! Our standout female E7385 is present in four of the ten bulls on offering.

This year we also invite you to our open house the morning of the online sale. We are excited walk you through the bulls but will also have the females and our herd sires (Lots 7-10) of these bulls on display.

We look forward to speaking with you, and we thank you for your continued trust and support of our breeding program.

Warm regards,

*Landon Hoffer*  
307-399-9160



**Sale Day Phones:**

Landon Hoffer 307-399-9160

Tim Hoffer 307-399-7522

**Delivery:**

Free delivery within 250 miles of the ranch and \$0.40/mile/animal after that to central locations.

**Herd Health:**

Bulls will sell with Trich tests and have been on a full herd health program.

**Breeding Season Guarantee**

All bulls sell with a one season guarantee that starts at turnout and ends 90 days after. This protects from death, injury, and infertility. Credit will be granted in the next year's sale.

Note: a veterinary statement is required.



Tim and Stacy Hoffer

# Reds In The Rockies

Online Only Sale

1 PM MST Saturday, March 28th, 2026

**Sale Link**



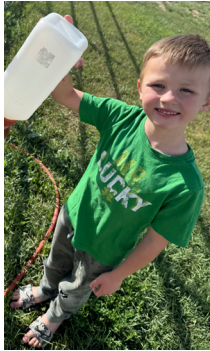
**DVAuction**  
Broadcasting Real-Time Auctions



Landon, Amy, Carter, Jace, Jentry and Cameron Hoffer



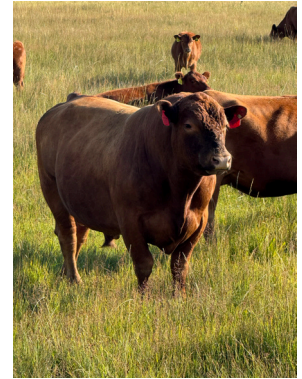
Taking in a soccer game



Jace feeding Nova



Amy baling hay on the Pitchfork Ranch Meeteetse, WY



Herd Sire LTH Plainsman 01K



LTH Chesney E081 N015  
Plainsman Daughter



Cameron and Jentry practicing  
for Laramie Jubilee Days



Carter and Jace after flag football



Jentry and Landon stacking hay



## SHAG RED LABEL 120

RRREDS SENECA 731C  
 LEM RELIABLE 9003E  
 LEM REDEMPTION 616ET

Sire of Lots  
 2

RED FLYING K MAX 159Y  
 SHAG MS. MAX 944  
 ARO MS UNO 273



## DAHLKE OUTCOME 016H

COLLIER FINAL PRODUCT B389  
 COLLIER FINISHED PRODUCT  
 COLLIER AMY B385

Sire of Lots  
 4

ANDRAS FUSION R236  
 DAHLKE MS. SANDY 271C  
 DAHLKE TRENDY SANDI 127U

ProS	HB	GM	CED	BW	WW	YW	MILK	HPG	CEM	STAY	MARB	ProS	HB	GM	CED	BW	WW	YW	MILK	HPG	CEM	STAY	MARB
195	131	64	10	.1	71	117	22	13	8	25	.47	87	53	34	24	-8.2	58	100	25	12	13	13	.30
1	1	30	85	79	38	32	81	38	32	1	45	67	48	76	1	1	80	65	57	50	1	75	74

% Rank

*Reference Sire*



**BB PROPULSION 9096**

PIE ONE OF A KIND 352  
 PIE ONE OF A KIND 777  
 PIE JULY DALLES 569

**Sire of Lots**  
 3  
 5

LARSON SUN KING 016  
 BB MS GINNIE 6256  
 BB MS GINNIE 6019-2057

*Reference Sire*



**BIEBER BLUE CHIP H302**

PIE STOCKMAN 4051  
 BIEBER STOCKMARKET E119  
 BIEBER CLADELLE 475C

**Sire of Lots**  
 1

BIEBER IRON ORE A104  
 BIEBER ROSE 162C  
 BIEBER ROSE 475A

ProS	HB	GM	CED	BW	WW	YW	MILK	HPG	CEM	STAY	MARB	ProS	HB	GM	CED	BW	WW	YW	MILK	HPG	CEM	STAY	MARB
111	54	57	11	-1	84	129	29	16	6	12	.70	202	115	87	18	-5.6	69	113	25	11	10	23	1.17
40	46	39	76	63	8	16	25	9	65	78	16	1	1	8	7	5	43	39	58	57	9	1	1

% Rank



# 1 LTH BLUE CHIP 001N

**BIEBER CL STOCKMARKET E119 REG: 5048701**  
**BIEBER BLUE CHIP H302 BIRTH: 2/10/25**  
**BIEBER ROSE 162C BW: 79**

**COLEYS MOJITO 503R WW: 639**  
**LTH COPPER QUEEN E7385 J113**  
**LSF SRR CRYSTAL X0054 E7385 YW:**

ProS	HB	GM	CED	BW	WW	YW	MILK	HPG	CEM	STAY	MARB
143	90	53	14	-2.3	73	113	25	10	6	22	.69
10	5	44	35	41	25	34	49	86	69	1	14

% Rank



# 2 LTH RED LABEL 018N

**LEM RELIABLE 9003 ET REG: 5067807**  
**SHAG RED LABEL 120 BIRTH: 3/22/25**  
**SHAG MS. MAX 944 BW: 89**

**PIE OPPORTUNITY 3041 WW: 666**  
**LSF SRR CRYSTAL E7385**  
**LSF CRYSTAL T7033 X0054 YW:**

ProS	HB	GM	CED	BW	WW	YW	MILK	HPG	CEM	STAY	MARB
156	101	55	8	1.4	83	134	25	13	7	21	.38
5	1	41	96	94	6	7	59	21	40	2	69



### 3 **LTH PROPULSION 005N**

**PIE ONE OF A KIND 777**  
**BB PROPULSION 9096**  
**BB MS GINNIE 6256**

**LSF SRR REDEMPTION 4422B**  
**LSF SRR JOAN B4350 E7396**  
**LSF SRR JOAN B4359**

**REG:** 5049836  
**BIRTH:** 2/12/25  
**BW:** 70  
**WW:** 576  
**YW:**



### 4 **LTH OUTCOME 004N**

**COLLIER FINISHED PRODUCT**  
**DAHLKE OUTCOME 016H**  
**LSF SRR DELLA C5027 E7260**

**LTH 30LC MOUNTAIN TIME 13J**  
**LTH BROOKLYN J111 L031**  
**LTH MARIE 6066 J111**

**REG:** 5049837  
**BIRTH:** 2/11/25  
**BW:** 64  
**WW:** 640  
**YW:**

ProS	HB	GM	CED	BW	WW	YW	MILK	HPG	CEM	STAY	MARB	ProS	HB	GM	CED	BW	WW	YW	MILK	HPG	CEM	STAY	MARB
139	71	68	15	-4.4	70	108	27	14	8	16	.78	76	50	25	23	-6.3	64	99	27	12	10	15	.44
13	20	20	18	11	35	45	36	17	24	43	8	87	57	93	1	2	60	63	40	48	4	53	49

% Rank



## 5 LTH PROPULSION 006N

PIE ONE OF A KIND 777  
**BB PROPULSION 9096**  
 BB MS GINNIE 6256

BIEBER TAKEOVER B350  
**LSF SRR RAINBOW B4315 E7143**  
 LSF SRR RAINBOW B4315

**REG:** 5050431  
**BIRTH:** 2/14/25  
**BW:** 86  
**WW:** 612  
**YW:**

## 6 LTH MOUNTAIN TIME 023N

LSF SRR MAXIMUM 7410E  
**LTH MOUNTAIN TIME 13J**  
 LSF SRR DELLA C5027 E7260

LORENZEN ANALYTICS E05  
**LTH CRYSTAL E7385 G907**  
 LSF SRR CRYSTAL X0054 E7385

**REG:** 5070933  
**BIRTH:** 3/28/25  
**BW:** 71  
**WW:** 548  
**YW:**

ProS	HB	GM	CED	BW	WW	YW	MILK	HPG	CEM	STAY	MARB	ProS	HB	GM	CED	BW	WW	YW	MILK	HPG	CEM	STAY	MARB
121	65	56	10	-2.2	66	101	25	13	8	14	.47	126	53	73	12	-1.3	81	126	31	15	6	14	.59
29	29	39	86	43	49	60	56	20	25	59	43	23	52	14	59	59	9	14	9	8	66	63	24

% Rank



## 7 LTH PLAINSMAN 016N

LSF SRR MAGICIAN 0067H  
**LTH 30LC PLAINSMAN 01K**  
 LSF SRR DELLA C5027 E7260

**REG:** 5067797  
**BIRTH:** 3/19/25  
**BW:** 77  
**WW:** 600  
**YW:**

BIEBER BLUE CHIP H302  
**LTH MIRAGE E7385 L036**  
 LSF SRR CRYSTAL E7385

## 8 LTH PLAINSMAN 031N

LSF SRR MAGICIAN 0067H  
**LTH 30LC PLAINSMAN 01K**  
 LSF SRR DELLA C5027 E7260

**REG:** 5086973  
**BIRTH:** 5/5/25  
**BW:** 68  
**WW:** 706  
**YW:**

LTH LONGMIRE 911G  
**LTH VIVID E7143 J106**  
 LSF SRR RAINBOW B4315 E7143

ProS	HB	GM	CED	BW	WW	YW	MILK	HPG	CEM	STAY	MARB	ProS	HB	GM	CED	BW	WW	YW	MILK	HPG	CEM	STAY	MARB
132	57	76	15	-3.6	74	119	25	13	9	14	.77	111	33	78	11	-1.9	75	119	24	10	8	11	.71
17	44	12	22	19	23	24	55	28	19	62	8	41	84	10	77	49	21	23	63	73	38	87	12

% Rank



## 9 LTH PLAINSMAN 027N

LSF SRR MAGICIAN 0067H  
LTH 30LC PLAINSMAN 01K  
LSF SRR DELLA C5027 E7260

**REG:** 5075083

**BIRTH:** 4/7/25

**BW:** 87

**WW:** 572

**YW:**

H2R PROFITBUILDER B403  
LSF SRR DORY JIBA E7107  
LSF SRR DORY JIBA B4353

## 10 LTH MIDNIGHT 020N

BIEBER STOCKMARKET H516  
LTH MIDNIGHT BLUE 3004  
BIEBER ROSE 162C

**REG:** 5069685

**BIRTH:** 3/25/25

**BW:** 59

**WW:** 528

**YW:**

HXC GRINDSTONE 9908G  
LTH Hi FIRE E7195 L025  
LSF SRR Hi FIRE C5325 E7195

ProS	HB	GM	CED	BW	WW	YW	MILK	HPG	CEM	STAY	MARB	ProS	HB	GM	CED	BW	WW	YW	MILK	HPG	CEM	STAY	MARB
119	43	76	15	-3.4	75	120	22	10	9	13	.69	130	75	55	11	-1.3	69	109	27	12	8	18	.47
32	70	12	24	22	19	22	85	78	19	78	14	20	15	41	72	59	38	43	36	49	25	18	43

% Rank

Hoffer Red Angus

Bosler

Bamforth  
National  
Wildlife  
Refuge  
Temporarily closed

Laramie

